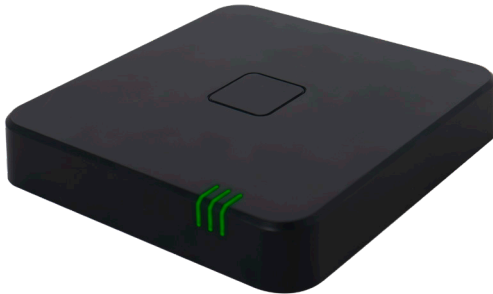




BRI4PIMHA



## WIRELESS MULTI-PROTOCOL GATEWAY

LoRa / Wi-Fi / Bluetooth / ZigBee  
To connect and remote control a HVAC installation

### Overview

#### Main features

- Multi-protocol gateway : LoRa, Bluetooth, Wi-Fi and ZigBee
- Via UFH Ectrl mobile application : Remote control of several ecosystems of products such as controllers and thermostats.

#### Applications

- Hydraulic underfloor heating/cooling



Connect a HVAC installation and remote control it by the free application

ufh@ctrl



#### Benefits

- **Customizable 2-in-1 mobile application** with intuitive interface:
  - **Installer mode:** quick and easy configuration and commissioning
  - **User mode:** system information and management
- **One-touch pairing**
- **3 multifunctional indicator lights:** informs you of the status of networks connections and warnings
- **OTA (Over The Air) microprocessor** for remote software updates via the Cloud
- Elegant, modern design

## Functional specifications

### Use

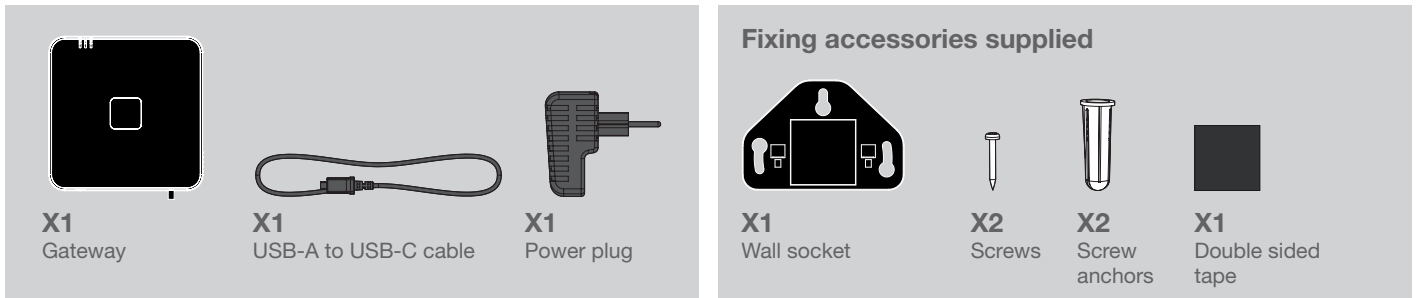


<b>Communication</b>	The Gateway is managed by the app, using Bluetooth for pairing and management of the connections, and uses Wi-Fi for remote control features It can manage : - LoRa products and connect products to the Cloud via Wi-Fi - LoRa products by ZigBee box through ZigBee 3.0 protocol
<b>Use cases</b>	<b>Local control (via Bluetooth, with or without Internet):</b> - Connection of the gateway with free mobile application and pair with associated products without internet; - Installation parameters and settings <b>Remote control (via Internet)</b> - Wi-Fi: Management of setpoint temperatures, choice of operating modes, start/stop of programming, display of setpoint temperatures for each room, and access to diagnostics - Gateway connection to a third-party home automation box, enabling remote control of the installation via a dedicated application (ZigBee ecosystem)
<b>Connexion au Cloud</b>	Secure back-up of data on dedicated personal account

### Installation

<b>3 installation options</b>	Placed on a flat surface (furniture, desk) thanks to its 4 anti-slip pads Wall-mounted (accessories supplied): - Using screws and screws anchors - Or fixed with the adhesive tape
-------------------------------	---

## Pack content



**Note:** Spare parts are available and can be purchased separately, contact us for more information.

### Easy to install: connection with the plug and USB cable supplied

## Wireless transmission

Protocol	Frequency	Use
<b>BLE</b> (Bluetooth Low Energy)	2400-2483.5 MHz (Transmission < 6 dBm)	Pairing the gateway with the mobile application: enables the gateway to be controlled locally (without an Internet connection), guaranteeing autonomous management of the installation even in case of a power cut Association of products with the application, enabling their configuration and locally control
<b>Wi-Fi</b>	2400-2483.5 MHz (Transmission < 20 dBm)	Connection of the gateway to an Internet box for remote control of your installation Connection to the Cloud, for secure backup of your data on a dedicated personal account OTA (Over The Air) ecosystem updates
<b>LoRa</b>	869.787-869.913 MHz (Transmission < 14 dBm)	Association and bidirectional communication between LoRa radio products and the gateway
<b>ZigBee</b>	2400-2483.5 MHz (Transmission < 10 dBm)	Connection of the gateway to a home automation box, enabling remote control of the installation via an application specific to the ZigBee ecosystem
<b>Transmission</b>	When change of state, every 5 minutes otherwise	

## Manual settings

<b>Two push buttons</b>	Central button to connect LoRa products, link the mobile application to the Gateway and connect to a ZigBee box	
	Side button for power on/off, and reset	

## App settings

<b>App UFH Ectrl</b>	<ul style="list-style-type: none"> <li>- Unpairing LoRa products</li> <li>- Change the Wi-Fi network</li> <li>- Unpair the ZigBee box</li> </ul>
----------------------	--

## Technical specifications

### Dimensional, weight and finish specifications

<b>Height</b>	100 mm
<b>Width</b>	100 mm
<b>Depth</b>	18 mm
<b>Weight</b>	100,8 g
<b>Color</b>	Black

### Electrical specifications

<b>Operating voltage</b>	230V AC $\pm$ 10%, 50 Hz + 5V DC USB-C cable
<b>Consumption in standby</b>	< 2W

The product is supplied with a USB cable and a power plug

## Environment

Protection rating	IP20
Class	Class II
Operating temperature	0°C to +40°C
Max. humidity level	90% at +25°C (without condensation)
Storage temperature	-20°C to +70°C

## Ecosystem

### Environment with an underfloor heating/cooling system



## Directives

RED	2014/53/UE
RoHS	2011/65/UE
Ecodesign	ERP 2009/125/CE + Regulations 801/2013/EU

## Standards

RED	2014/53/UE
Safety	EN 62368-1 ; EN 62311
EMC	ETSI EN 301489-1 ; ETSI EN 301489-3 ; ETSI EN 301489-17
RF	ETSI EN 300328 ; ETSI EN 300220-2
RoHS	EN IEC 63000
Ecodesign	EN 50564

## Product codes

Code	Description
BRI4PIMHA	Multi-protocol LoRa/Wi-Fi/Bluetooth/ZigBee gateway, black

## Compatible product(s) (sold separately)

Codes	Description
<b>UFH</b>	
UFHRF230EIMHBA	Wireless control unit for hydraulic underfloor heating/cooling systems, 12 channels, 230V electrothermal actuators
UFHRF24EIMHBA	Wireless control unit for hydraulic underfloor heating/cooling systems, 12 channels, 24V electrothermal actuators

### Wireless room thermostats

RSLRFIMHA	Radio room thermostat, white version
RSLRFIMHBA	Radio room thermostat, black version

Product customization (design features) possible. Please contact us.