



ETRVRFIMHA

SMART AND CONNECTED THERMOSTATIC RADIATOR VALVE CONTROLLER FOR HYDRAULIC RADIATOR

Manual control local (via Bluetooth®, with or without Internet connection) or remote control (with Internet connection) by the ECTRL customizable mobile application via the multi-protocol gateway. Orientable matrix display to suit installation.

Overview

Main features

- Room temperature control by opening and closing the valve at the hot water inlet to the radiator
- Setting and permanent display of the temperature setpoint
- Heating on/standby

Applications

- Central heating: hydraulic radiators and towel rails

Benefits

- Modern, sober differentiating 2-color style
- **Ergonomic 2-in-1 knob:** Rotary knob for navigation and setting, and push button for validation
- **Manual control** directly on the product
- **Local control (via Bluetooth®, with or without Internet connection) or remote control (with Internet connection)** through the gateway by smartphone, tablet or laptop, or by voice via the multi-protocol **ECTRL** mobile application
- Weekly and daily programming customizable from the app
- Quiet motor and gear for low-noise operation
- Latest-generation advanced electronics featuring an OTA (Over The Air) processor for the secure remote software updates via Bluetooth® protocol
- Compatible with most hydraulic valves thanks to its standard M30 x 1.5mm thread and 2 supplied adapters: M28 x 1.5mm and Danfoss RA



Connectivity ensured by our multi-protocol gateway



* Sold separately



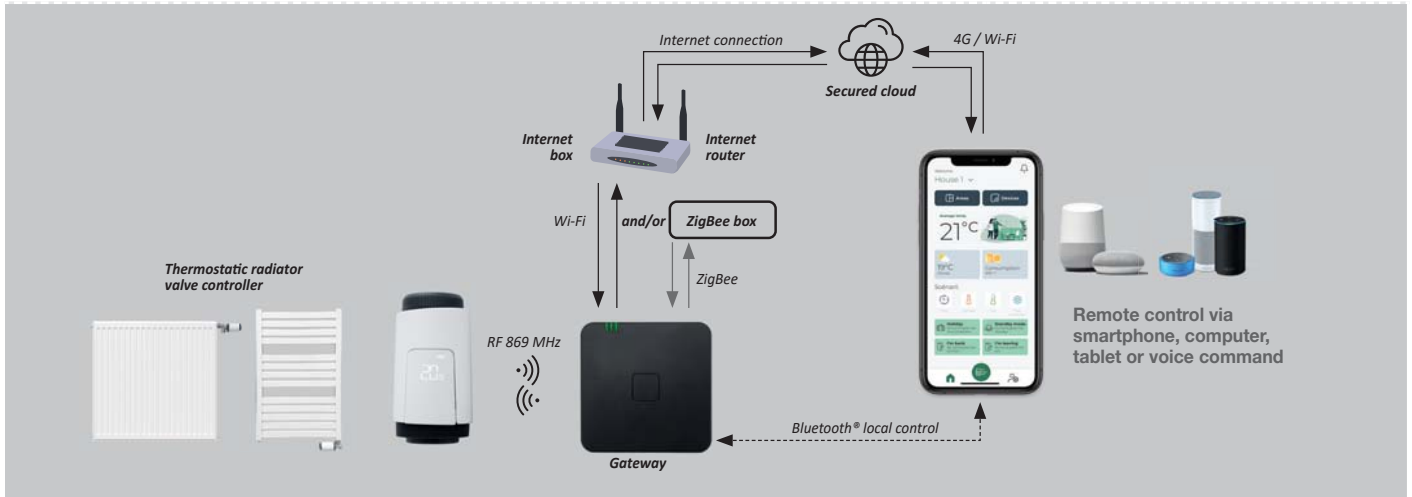
Functional specifications

Connectivity via the gateway



Communication and protocols	When the thermostatic radiator valve is controlled by the application, it communicates with the gateway via the extra long range 869 MHz RF protocol Bluetooth® protocol is used for software updates
Cloud connection	The gateway connects the product to the cloud via Wi-Fi Secured data storage in France on a dedicated personal account, in full compliance with GDPR data protection rules
Simplified identification	<ul style="list-style-type: none"> - When paired, each E-TRV is given an identifier that is displayed on the product for easy identification and on the app to assign it to a room in the home - The simplified identification on the app allows you to see which E-TRVs have been assigned to each room or area of the home, making it easy to place them in the correct location during installation
Autonomous, interoperable and scalable ecosystem	


Different mounting options, orientable display to suit all configurations

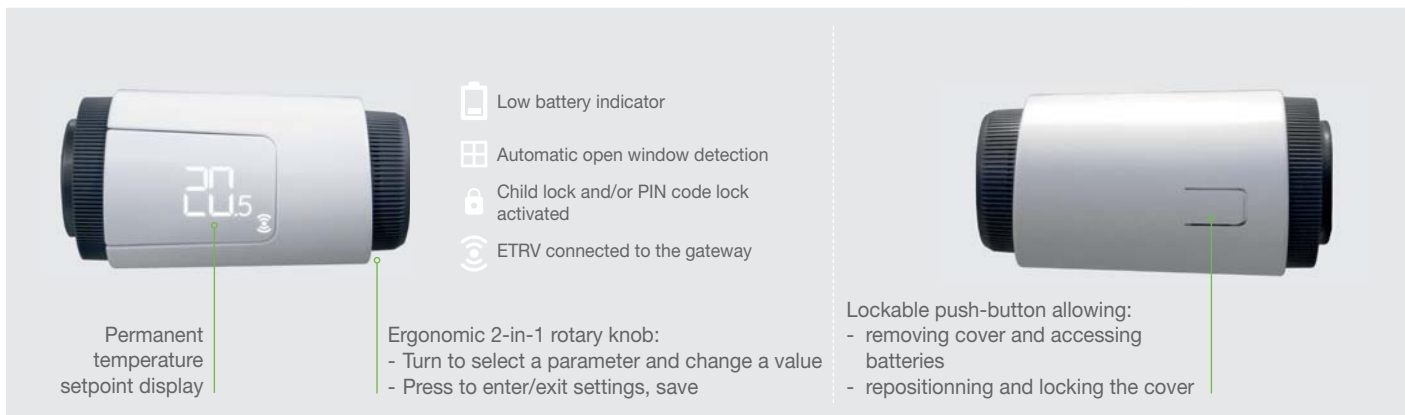
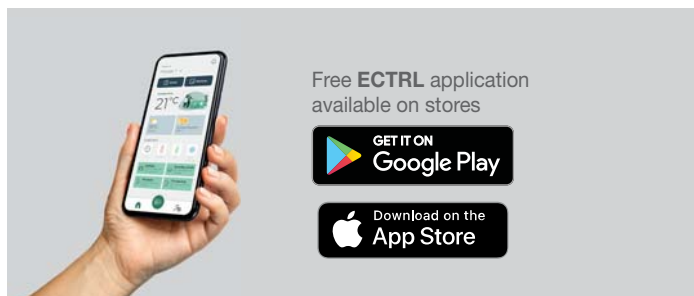


Use

Heating on/standby	By rotary knob or remotely via the app
Operating modes (only from the app)	Auto (programming), Comfort, Eco, Frost protection
Automatic open window detection	Automatic lowering the temperature setpoint to 7°C when a significant drop in temperature is detected during while a room is being aired
Programming (only from the app)	<ul style="list-style-type: none"> - Different programming profiles for each day of the week: 1, 2 or 3 Comfort periods of, Programming Assistant for step-by-step guidance - Customisable programmes for each day of the week (modifiable day by day or by group of days)
Safety	<ul style="list-style-type: none"> - Child lock: rotary knob lock - Setting safety : <ul style="list-style-type: none"> - Min. and Max limits of the setting range of the Comfort temperature setpoint - Customizable PIN code locking to prevent access to settings - Permanent setting backup - Diagnostic assistance via on-screen code display
3 levels of settings	User, Advanced, Expert
Control indicators	<ul style="list-style-type: none"> - Radio communication indicator between the E-TRV and the multi-protocol gateway - Low battery indicator - Automatic open window detection indicator - Lock indicator (child lock and PIN code)

Installation

Many installation options	<ul style="list-style-type: none"> - Horizontally to the left or right of the radiator - Vertically to the left or right of the radiator - Angled head, perpendicular to the radiator, to the left or right of the radiator
Quick installation thanks to compatibility	<ul style="list-style-type: none"> - The E-TRV thread is M30 x 1.5mm by design - M28 x 1.5mm adapter supplied - Danfoss RA adapter supplied - Self-calibration at start-up of thermostatic valve stroke 
Adjustable matrix LED screen	Choice of orientation on first start-up
Ultra low power mode	2 AA batteries supplied in easily accessible compartment
Integrated and automatic anti-seizing system	Protection function, automatic and regular calibration of the E-TRV preventing the valve piston from seizing during periods when the heating is off



User settings

Setpoint temperature	Default +20°C , adjustable from +5°C to +32°C in 0.5°C
Locking the knob	Disabled by default , can be activated
Wi-Fi connection (via the gateway)	Simple and quick pairing via the radio protocol to the gateway with identification number
Operating mode active (only from the app)	Comfort , Auto mode selection (programming) possible
Programming (only from the app)	Preset programmes that can be customised using the app

Advanced settings

Screen brightness	- 3 brightness levels available on the product: L3 (100%) by default - More refined luminosity settings via the app
Automatic open window detection	Enabled by default , can be disabled
Min. setpoint temperature	+5°C default , adjustable from +5°C to +15°C in 1°C
Max. setpoint temperature	+32°C default , adjustable from +20°C to +32°C in 1°C
PIN code locking	Customizable - Activation and deactivation
Ambient temperature	Display showing the temperature measured by the E-TRV in the room where it is installed
Display orientation	Horizontal position to the right of the radiator by default, settable

Reset : Return to initial configuration (user and advanced settings)

Expert settings

Anti-seizing function	Activation of the piston once a week by default or every 2 weeks
Temperature sensor calibration	Ambient temperature sensor calibration with automatic adjustment
Type of control	PID (Proportional Integral Derivative) control

Reset: Return to initial configuration (user, advanced and expert settings)

Technical specifications

Dimensional and finish specifications

Diameter	53 mm
Length	99 mm
Net weight	156 gr
Colors	White and anthracite grey

Electrical specifications

Operating voltage	2 x AA alkaline batteries (LR6 1.5V) supplied
Electronic temperature sensors	NTC

Radio transmission

Frequency	Bluetooth®: 2400-2483.5 MHz RF 869 MHz: 869.725-869.975 MHz
Broadcast	On change of state, otherwise one repeat every 5 minutes

Environment

Protection rating	IP30
Degree of pollution	2
Operating temperature	0°C to +40°C
Storage temperature	-20°C to +65°C
Stem displacement	Electromechanical actuator, spindle movement: 5.5mm max
Noise level	< 30dBA

Product codes

Code	Description
ETRVRFIMHA	Smart thermostatic white and anthracite grey radiator valve E-TRV

Related product(s) (sold separately)

Codes	Description
Multi-protocol gateway	
BRI4PIMHA	Multi-protocol RF 869 MHz/Wi-Fi/Bluetooth®/ZigBee gateway, black
BRI3PIMHA	Multi-protocol RF 869 MHz/Wi-Fi/Bluetooth® gateway, black

Product customization (design features) possible. Please contact us.